

# INDIANA

24% RECYCLING RATE  
WITHOUT FIBER AND FLEXIBLE PLASTICS (FFP)



## RANKING

RECYCLING RANK 2021 #16  
RECYCLING RANK 2018 #24 +8

- POPULATION 6,813,532
- CENSUS SUB REGION EAST NORTH CENTRAL
- RECYCLING REFUND STATE NO

## DATA QUALITY

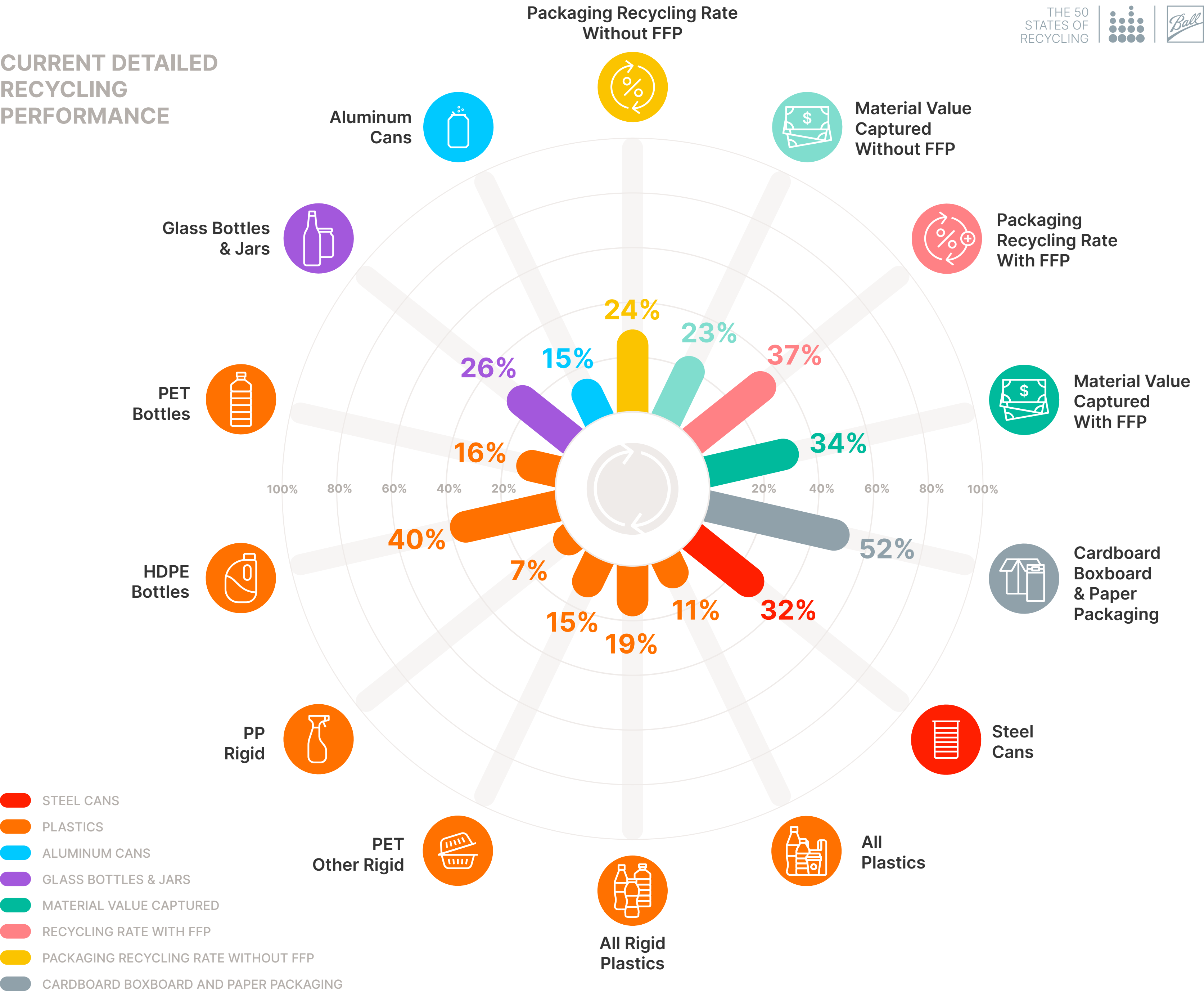


## OVERVIEW

Recycle Indiana is a branch of the Indiana Department of Environmental Management (IDEM) that works with partners across the state to promote and provide technical assistance with recycling. IDEM also administers a Recycling Market Development Program that provides grants to develop recycling markets across the state. In 2014, the state passed recycling legislation (HB 1182) that required annual reporting of recycling rates and set a goal to reach and sustain a recycling rate of 50%.

## CURRENT DETAILED RECYCLING PERFORMANCE

- STEEL CANS
- PLASTICS
- ALUMINUM CANS
- GLASS BOTTLES & JARS
- MATERIAL VALUE CAPTURED
- RECYCLING RATE WITH FFP
- PACKAGING RECYCLING RATE WITHOUT FFP
- CARDBOARD BOXBOARD AND PAPER PACKAGING



# INDIANA



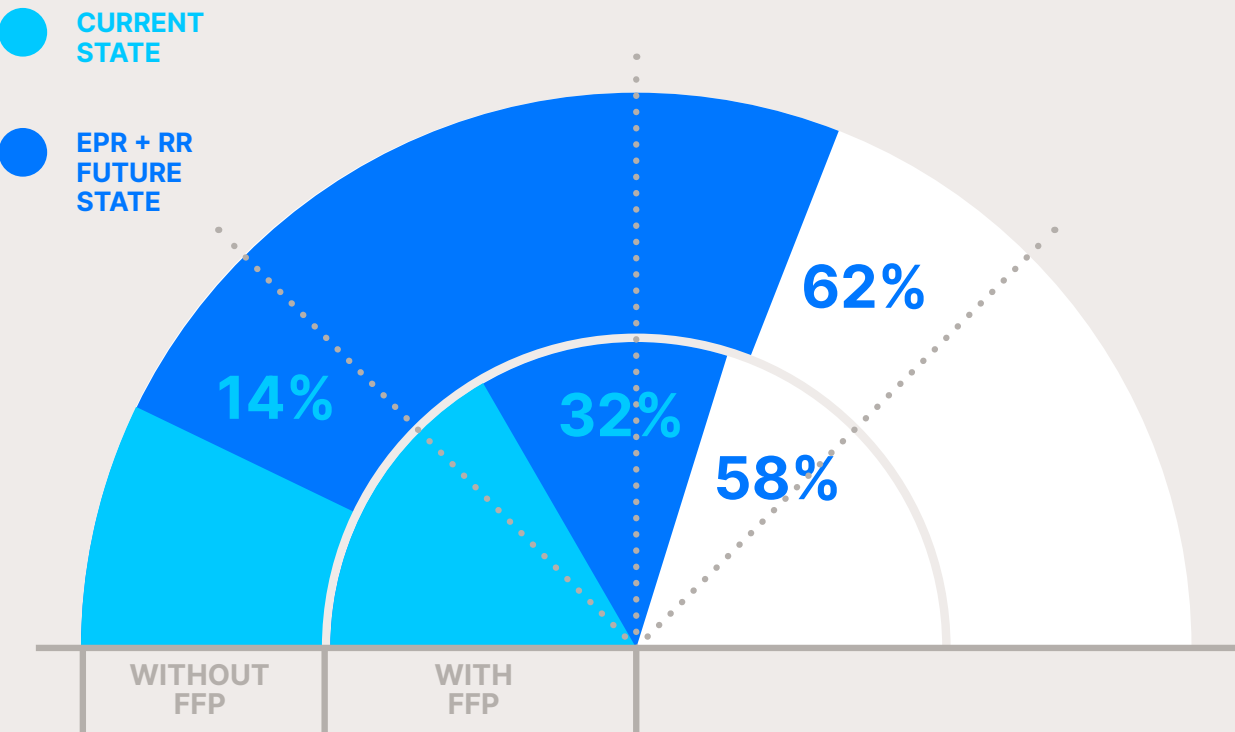
## CURRENT STATE OF RECYCLING

- In 2021, Indiana recycled approximately 24% of packaging materials without FFP. This recycling performance increases to 37% when considering materials with FFP.
- The value of the material captured for recycling was \$67 million, just 34% of the total value of material that could be captured for recycling.
- Recycling in the state avoided GHG emissions of 1.6 million MTCO<sub>2</sub>e.

## OUTCOMES EPR+RR

- Extended Producer Responsibility and Recycling Refund policy together could:
- Increase recycling related jobs from 3,900 to 11,200.
  - Place \$171 million of recycled material back in the market to support a circular economy and reduce the need for virgin material.
  - Avoid emissions of 2.5 million MTCO<sub>2</sub>e annually.

## CLOSED-LOOP IMPACTS



## THE ECONOMIC AND ENVIRONMENTAL OUTCOMES OF WELL-DESIGNED EXTENDED PRODUCER RESPONSIBILITY (EPR) + RECYCLING REFUND (RR) PROGRAMS

EPR assumes an overall recycling rate of 65% for residential packaging and RR assumes a 90% recycling rate for beverage containers

